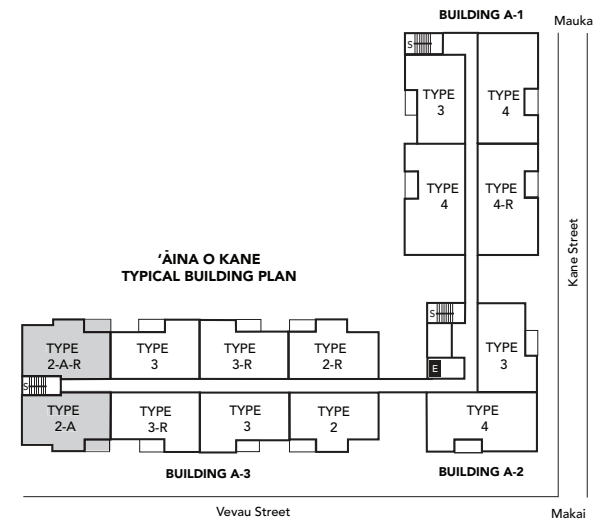
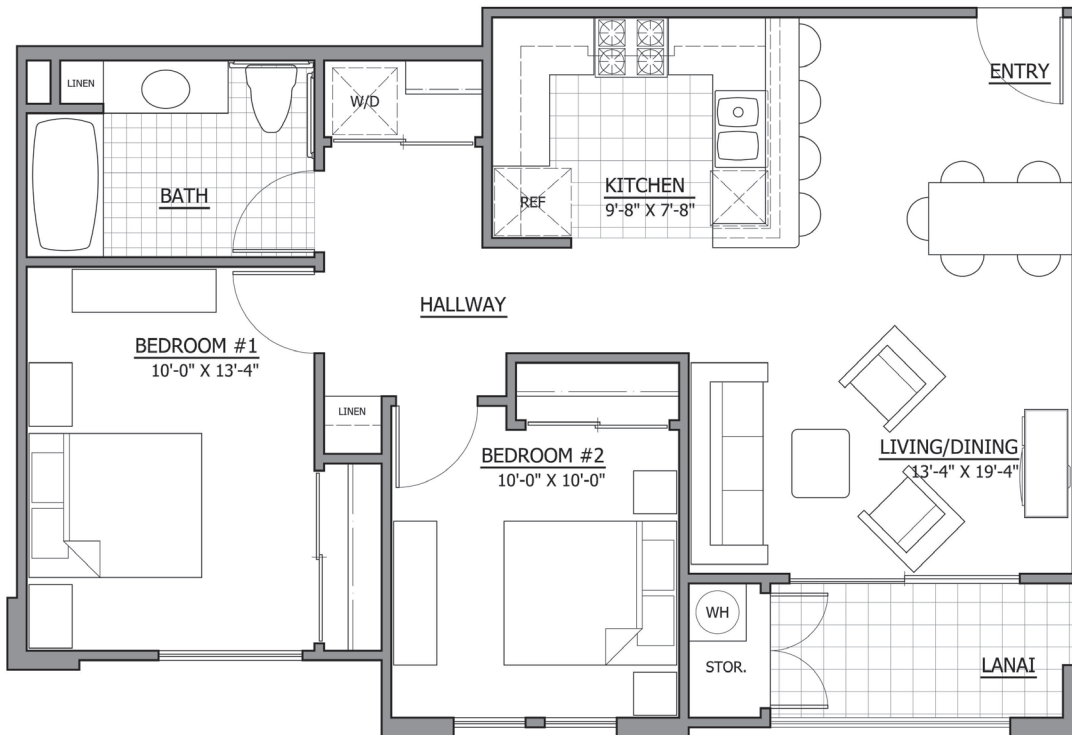


The Residences at 'Āina o Kane

BUILDING "A-3"
 TYPE 2-A
 TYPICAL FLOOR PLAN - 2 BR/1 BA
 757.8 SQ. FT



The information provided herein is subject to change. The developer reserves the right to modify project plans, specifications, materials and prices without prior notice or obligation. All photographs, paintings, drawings and other graphic representations contained herein are conceptual renderings only and do not purport to represent how the apartments, the project or any part of the project or its surroundings will actually appear when completed. Information contained herein about the project's current or future surroundings and the availability of services or facilities in the vicinity of the project (such as shopping, restaurants, entertainment, etc.) is based on information obtained through public sources, and the developer does not warrant the accuracy of any such information or the current or continued availability of any such services or facilities. Although the developer has tried to be accurate, complete and current in the information provided herein, THE DEVELOPER DOES NOT WARRANT THAT THE INFORMATION HEREIN IS ACCURATE, COMPLETE OR CURRENT, AND THE DEVELOPER ASSUMES NO LIABILITY FOR ANY RELIANCE ON THE INFORMATION CONTAINED HEREIN, NOR ANY RESPONSIBILITY TO UPDATE OR CORRECT ANY INFORMATION HEREIN. FOR IMPORTANT DETAILED AND ACCURATE INFORMATION AND DISCLOSURES ABOUT THE PROJECT, INCLUDING (BUT NOT LIMITED TO) THE DEVELOPER'S RESERVED RIGHTS TO MODIFY THE APARTMENTS AND THE PROJECT SUBSTANTIALLY, PLEASE ASK FOR AND REVIEW THE MOST RECENT DEVELOPER'S PUBLIC REPORT FOR A CONDOMINIUM (AND ALL AMENDMENTS OR AMENDED DEVELOPER'S PUBLIC REPORTS) FOR THE PROJECT. The information provided herein does not constitute an offer to sell or a solicitation of offers to buy an apartment or any other interest in the project in any state or jurisdiction where such offers or solicitations are prohibited by law or where registration or disclosure requirements have not been met.